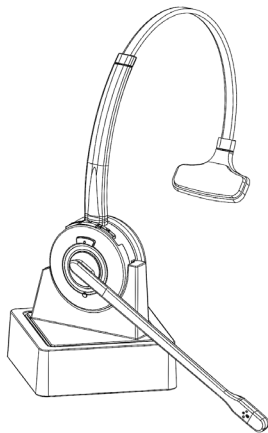


**hameco**

# **HS-8500**

## **bluetooth headset**



# **User Manual**

## CONTENT

1.	Welcome .....	2
2.	Product overview.....	2
2.1.	Package contents.....	2
2.2.	Headset overview.....	3
2.3.	Base overview .....	4
3.	Use instructions.....	4
3.1.	HS-8500/8600 BT pairing with bluetooth device .....	4
3.2.	HS-8500/8600 BT usage .....	5
3.3.	HS-8500/8600 BT charging.....	6
4.	Features .....	6
4.1.	Headset multi-function button.....	6
4.2.	Headset speaker volume button .....	6
4.3.	Headset mute button.....	6
4.4.	Headset LED indicators.....	7
5.	Technical specifications .....	8
5.1.	Headset.....	8
5.2.	Headset battery .....	9
5.3.	Charging base .....	9
5.4.	Product disposal treatment and FCC statement .....	10
6.	Product disposal .....	11

## 1. WELCOME

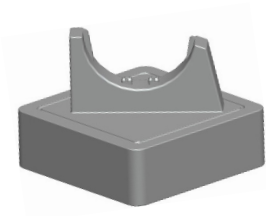
Thank you for using the new HS-8500/8600 Bluetooth Headset. We are confident that you will fully enjoy the range of powerful features this headset has, and also be pleasantly surprised to find the headset comfortable to wear and easy to use.

## 2. PRODUCT OVERVIEW

### 2.1. Package Contents



Headset



Charging base

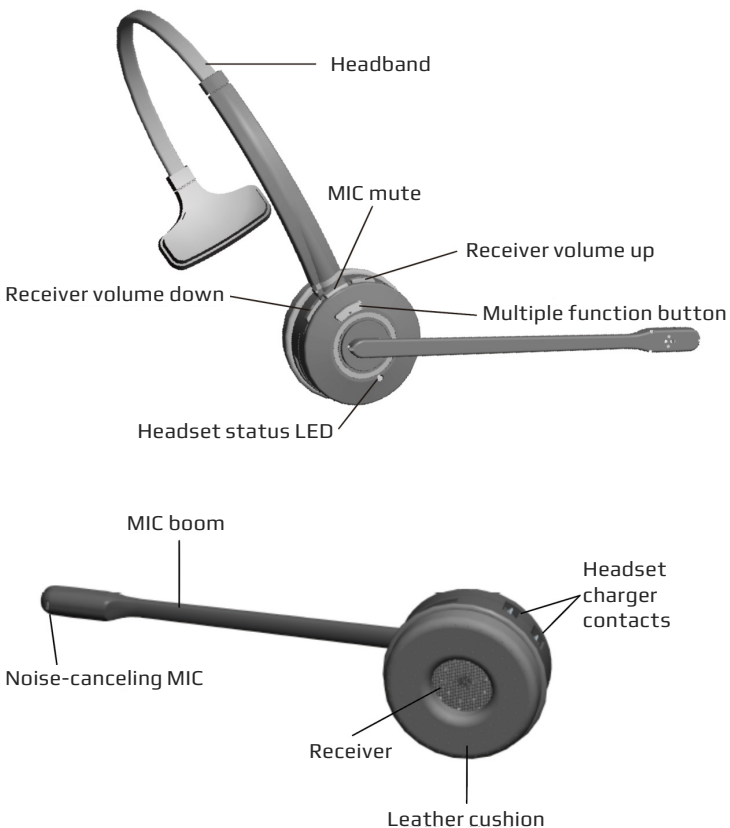


Micro USB cable

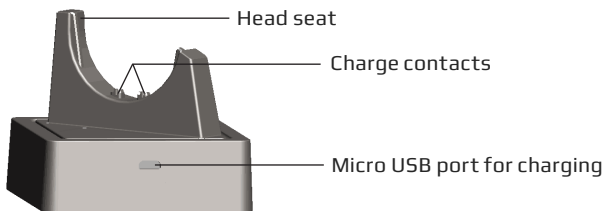


User manual

## 2.2. Headset Overview




### 2.3. Base Overview



## 3. USE INSTRUCTIONS

### 3.1. HS-8500/8600 BT Pairing with Bluetooth Device

1. Please ensure that your smartphone/laptop is equipped with a Bluetooth function.
2. Check that the Bluetooth function on your smartphone/laptop is active.
3. Turn on your headset.
4. Pair the headset with your smartphone/laptop.
5. Press the multi-function key  for more than 6 seconds, the LED will flash red and blue alternately, which indicates the headset is in pairing mode.
6. Search Bluetooth device on your smartphone/laptop. Open "Bluetooth" menu and press "discover" or "add" to search HS-8500/8600 BT on your smartphone/ laptop.
7. When "HS-8500/8600 BT" shows up on your Bluetooth devices list, please click it to begin the pairing. Sometimes the PIN code "0000" is required.
8. If pairing is successful, the LED will turn blue and HS-8500/8600 BT icon will show up on your smartphone/laptop. You can make calls or listen to music now. For future connections re-pairing the device is not required, just click the HS-8500/8600 BT icon to connect.

9. If pairing fails, please turn off the headset, and repeat step 4.
10. HS-8500/8600 BT can pair with two devices simultaneously. If you want to pair HS-8500/8600 BT with another device simultaneously, please turn off the Bluetooth function on the first smart phone/laptop and power off the headset. Then repeat step 2, step 3, and step 4 with the second smartphone/laptop. After pairing successfully, reactivate the Bluetooth function on the first smartphone/laptop. You will find HS-8500/8600 BT pairing with two devices now.
11. If no smartphone/laptop is paired with the HS-8500/8600 BT within 120 seconds in pairing mode, the HS-8500/8600 BT will shut down to save power consumption automatically.
12. After pairing with the HS-8500/8600 BT, you can rename it on your smartphone/laptop.

Tips: The headset uses a procedure called “pairing” to connect to a Bluetooth device.

### 3.2. HS-8500/8600 BT Usage

#### 1. Answering a Call

After your smartphone/laptop is successfully paired with the HS-8500/8600 BT, the headset will ring when a call is incoming, please press the multi-function key to answer.

#### 2. Hanging up a Call

Briefly press the multi-function key to hang up a call.

#### 3. Muting and unmuting the microphone:

During a call, briefly press the MUTE button to mute the microphone. By briefly pressing the MUTE button again, the microphone will be turned back on.

#### 4. Volume Adjustment

Briefly click the volume + key to increase the volume, and briefly click the volume - key to decrease it.

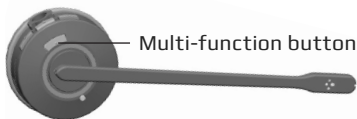
### 3.3. HS-8500/8600 BT Charging

When the HS-8500/8600 BT headset is charging, the red light will turn on. A green light will appear when it is fully charged. When taking the headset off from its charger base, the headset will be in standby mode. It will shut down automatically to save power consumption if there is no pairing.

## 4. FEATURES

### 4.1. Headset multi-function button

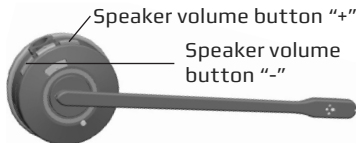
Briefly or lengthily press the multi-function button to answer and end a call.



Function	Short press	Long
Answer a call	✓	
End a call	✓	
Power on		3s
Pairing		6s+
Power off		3s

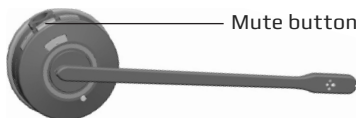
### 4.2. Headset Speaker Volume Button

The speaker volume buttons: to adjust the headset speaker volume.



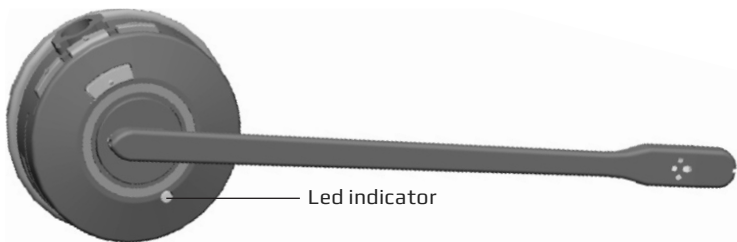
### 4.3. Headset Mute Button

Mute button: to make the microphone mute or unmute.



#### 4.4. Headset LED Indicators

LED indicates call status



Headset status	LED status
Power on	Blue light flashes four times (300ms on, 300ms off)
Power off	Red light flashes once (2s)
Pairing mode	Blue light and red light flash alternately (red light on 750ms, blue light on 750ms)
Pairing successfully	Blue light flashes (300ms on, 8s off)
Answer a call or play music	Blue light flashes (300ms on, 8s off)
Charging	Red light on
Fully Charged	Blue light on



## 5. TECHNICAL SPECIFICATIONS

### 5.1. Headset

- Wideband audio for exceptional sound quality
- Volume and mute controls
- Advanced hearing protection with safetone™
- Bluetooth Version: V5.0 backward compatible
- Profile: Headset: 1.2 Handsfree: 1.6 A2DP
- Microphone with noise cancellation
- Crystal clear sound and voice (DSP)
- Range: up to 10m for HS-8500 BT, up to 30m for HS-8600 BT
- Talk time: 21 hours from 300mAh battery
- Stand by time: 500 hours
- Working environment: 0 °C to +40 °C; up to 95% relative humidity non-condensing
- Visual indicators: LED indicates call status, pairing status and others
- Beep: indicates volume level, microphone mute, and others
- Sound: Microphone noise canceling, the sixth generation CVC echo cancellation, tone control
- Charging: When HS-8500/8600 BT docking the base to charge

## 5.2. Headset battery

Battery type:	Lithium-ion polymer
Battery capacity:	300 mA per hour standard
Battery talking time:	Up to 21 hours
Battery life:	Minimum recharging 1000 times
Battery standby time:	At least 500 hours
Operating temperature range:	-20 °C to +60 °C
Battery charging time:	Less than 60 minutes to charge 20% Less than 90 minutes to charge 50% Fully charged in less than 3.5 hours
Battery storage life:	If the headset is turned off before first charging, the battery will have power for six months.

## 5.3. Charging Base

HS-8500/8600 BT charging base meets the following specifications.

Port:	The micro USB port is the power interface, use the USB cable to connect to your PC or USB adapter to charge
Size:	81 mm × 81 mm × 67 mm
Weight:	135±5g

## 5.4. Product Disposal Treatment and FCC statement

**5.4.1. Dispose of in accordance with local regulations as headphones and recycling regulations. Never treat headset as household waste. Do not dispose of the headset in a fire, as the battery may explode. If damaged, the battery may explode.**

### 5.4.2. FCC statement:

This device complies with part 15 of the FCC Rules. Operation is subject to the following two conditions: (1) This device may not cause harmful interference, and (2) this device must accept any interference received, including interference that may cause undesired operation.

**Warning:** Changes or modifications not expressly approved by the party responsible for compliance could void the user's authority to operate the equipment.

**Note:** This equipment has been tested and found to comply with the limits for a Class B digital device, pursuant to part 15 of the FCC Rules. These limits are designed to provide reasonable protection against harmful interference in a residential installation. This equipment generates uses and can radiate radio frequency energy and, if not installed and used in accordance with the instructions, may cause harmful interference to radio communications. However, there is no guarantee that interference will not occur in a particular installation. If this equipment does cause harmful interference to radio or television reception, which can be determined by turning the equipment off and on, the user is encouraged to try to correct the interference by one or more of the following measures:

Reorient or relocate the receiving antenna.

Increase the separation between the equipment and receiver.

Connect the equipment into an outlet on a circuit different from that to which the receiver is connected.

Consult the dealer or an experienced radio/TV technician for help.

**RF Warning Statement:**

This equipment complies with FCC radiation exposure limits set forth for an uncontrolled environment. This transmitter must not be co-located or operating in conjunction with any other antenna or transmitter.

**6. PRODUCT DISPOSAL****Safety**

For your own safety, this product should only be used with CE and RoHS approved equipment. Using this headset with non-approved equipment would void the warranty of this product.

**Disposal of your product**

Municipal waste stream. Old appliances must be collected separately in order to optimise the recovery and recycling of the materials to reduce the impact on human health and the environment. The crossed out "wheeled bin" symbol on the product reminds you of your obligation that when you dispose of the appliance, it must be separately collected. Consumers should contact their local authority or retailer for information concerning the correct disposal of their old appliance.

